

ASSEMBLY INSTRUCTIONS

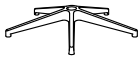


Office Boffins

A-1 PC



B-1 PC



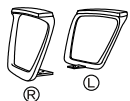
C-5 PCS



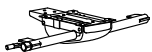
D-1 PC



E-2 PCS



F-1 PC



G-1 PC



H1-6 PCS



25mm

H2-4 PCS



20mm

H3-3 PCS



20mm

I-3 PCS



Φ16mm

J-3 PCS



Φ23mm

K-1 PC

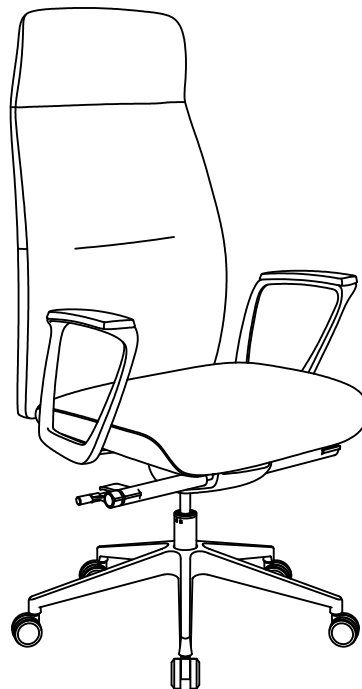


4mm

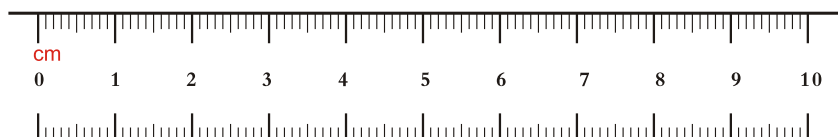
K1-1 PC



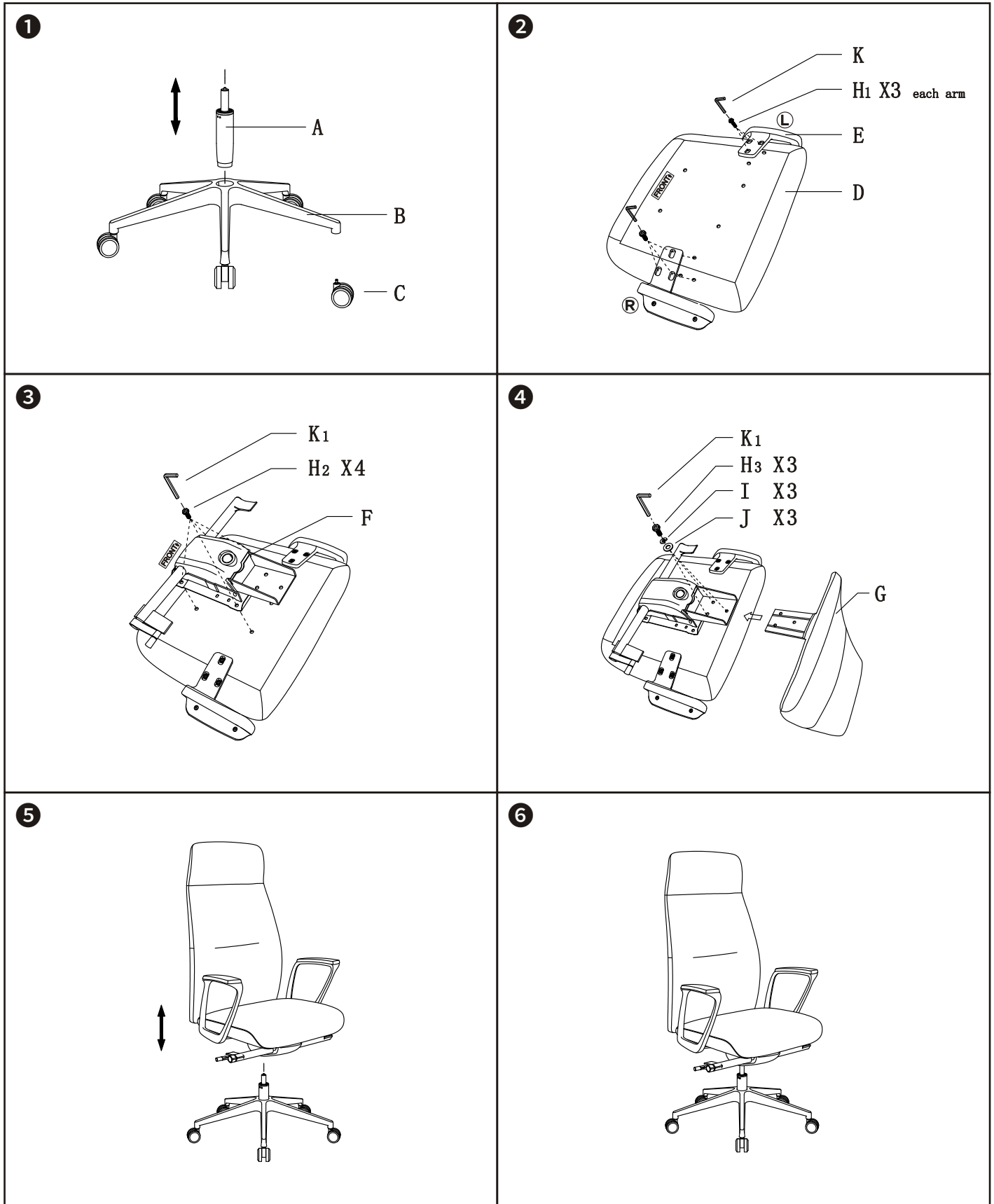
5mm



NOBL001-K

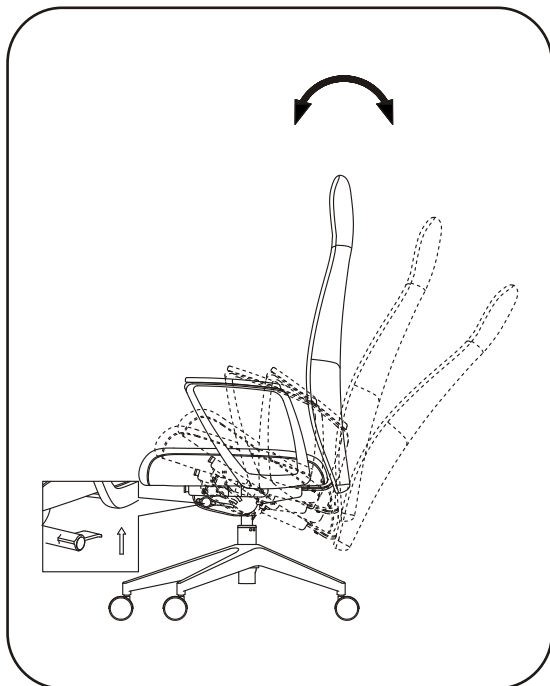


**Do not tighten bolts fully until you have completed assembly.
DO NOT USE A POWER DRILL TO TIGHTEN THE SCREWS.
TIGHTEN BY HAND WITH THE ALLEN KEY PROVIDED.**

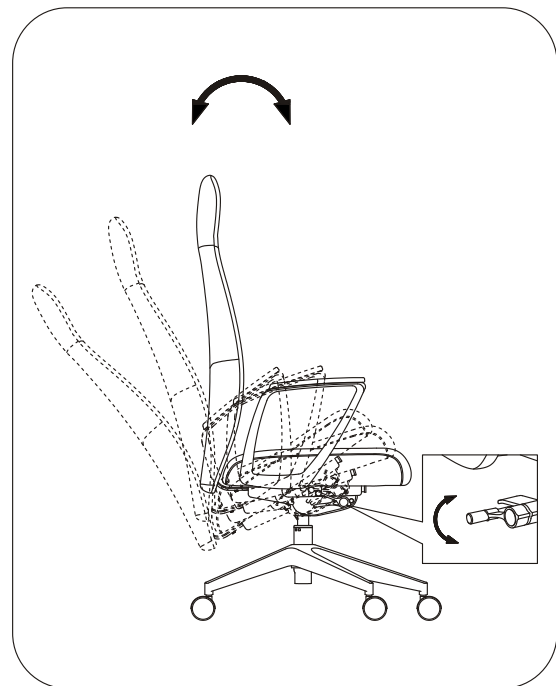


WARNING

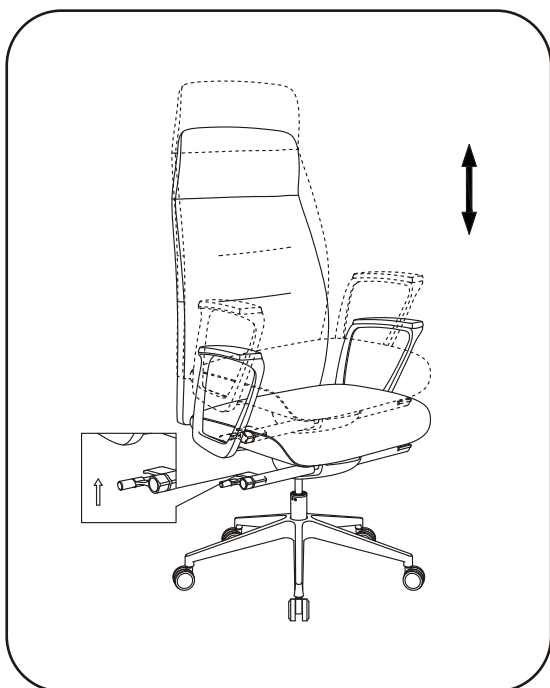
- DO NOT STAND ON THIS CHAIR.
- DO NOT USE THIS CHAIR AS A STEP LADDER.
- USE THIS PRODUCT FOR SEATING ONE PERSON AT A TIME ONLY.
- DO NOT USE THIS CHAIR UNLESS ALL BOLTS, SCREWS AND KNOBS ARE FIRMLY SECURED.
- AT LEAST EVERY 6 MONTHS, CHECK ALL BOLTS, SCREWS AND KNOBS TO BE SURE THEY ARE TIGHT.
- IF PARTS ARE MISSING, BROKEN, DAMAGED OR WORN, STOP USING THIS PRODUCT UNTIL REPAIRS ARE MADE USING FACTORY AUTHORISED PARTS.
- FAILURE TO FOLLOW THESE WARNINGS COULD RESULT IN SERIOUS INJURY.



Synchronised Tilt Adjustment, lift handle up to release tilt, push handle down to lock in 5 positions.



Weight Tension Adjustment, turn clockwise to increase resistance, anti-clockwise to decrease.



Seat Height Adjustment, lift handle to raise/lower seat height.