

ASSEMBLY INSTRUCTIONS



Office Boffins

A-1 PC



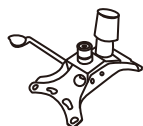
B-5 PCS



C-1 PC



D-1 PC



E-2 PCS



F-4 PCS
M8x22mm



Pre-inserted

G-8 PCS
M6x22mm



Pre-inserted

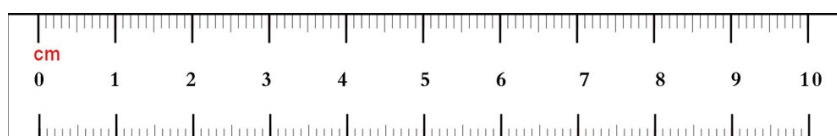
H-8 PCS



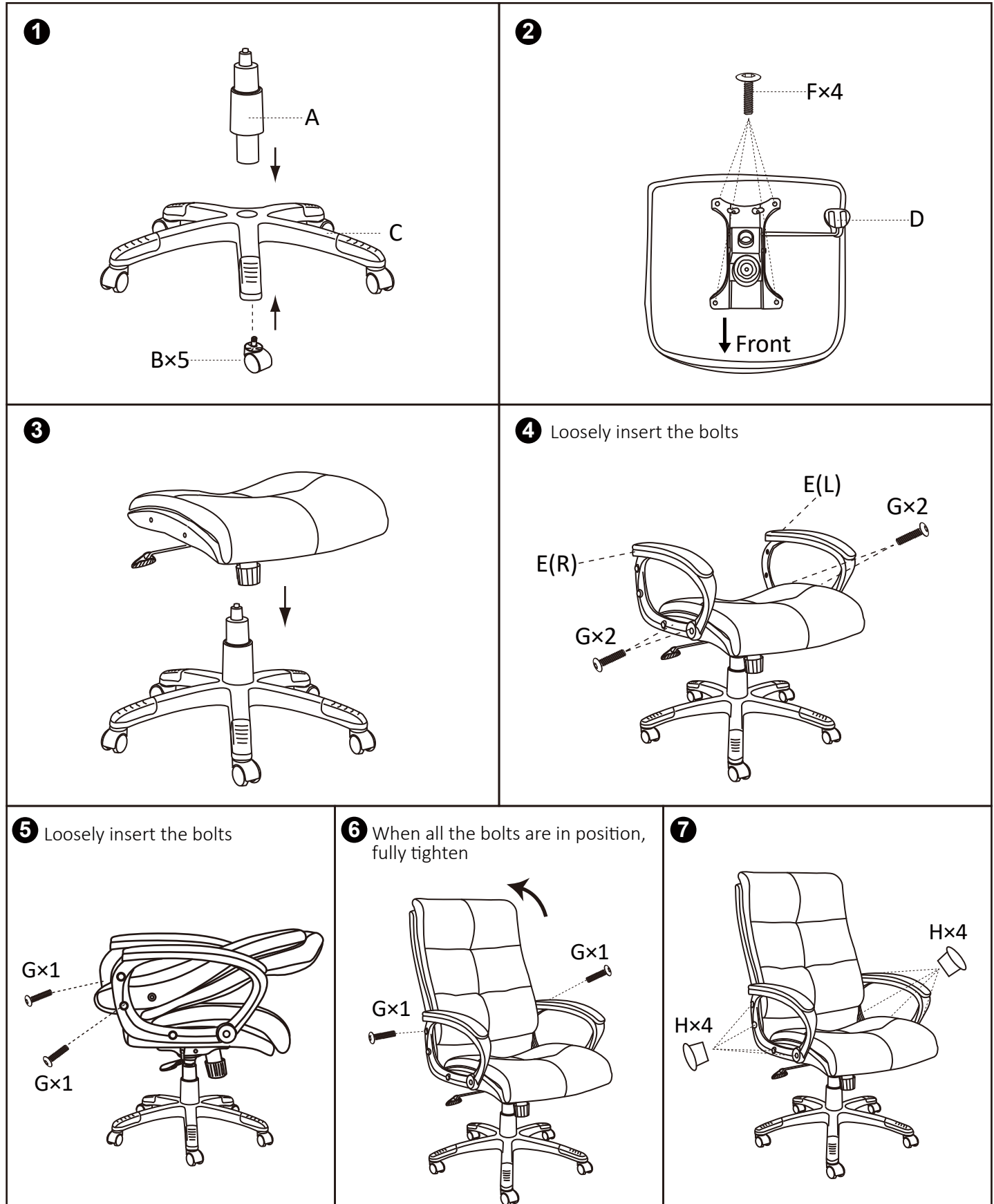
I-1 PC



CODF001

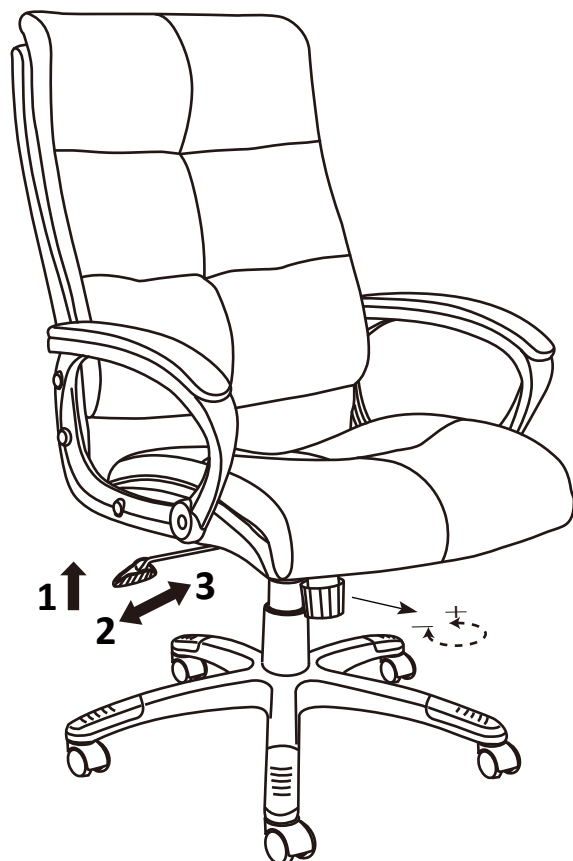


Do not tighten bolts fully until you have completed assembly.
DO NOT USE A POWER DRILL TO TIGHTEN THE SCREWS.
TIGHTEN BY HAND WITH THE ALLEN KEY PROVIDED.

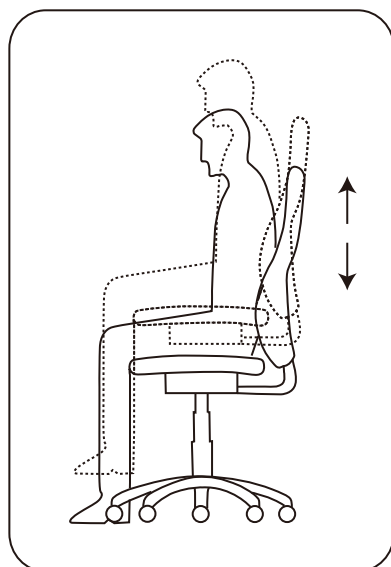


WARNING

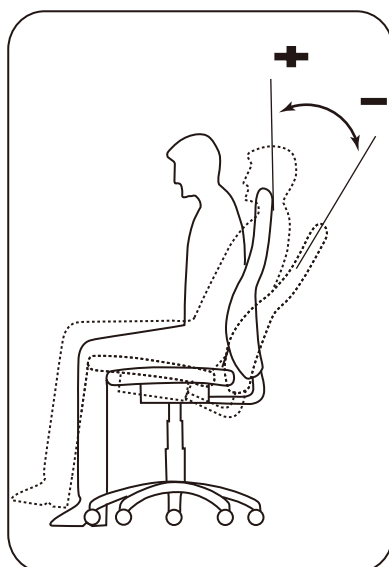
- DO NOT STAND ON THIS CHAIR. DO NOT USE THIS CHAIR AS A STEP LADDER
- USE THIS PRODUCT ONLY FOR SEATING ONE PERSON AT A TIME
- DO NOT USE THIS CHAIR UNLESS ALL BOLTS, SCREWS AND KNOBS ARE FIRMLY SECURED
- AT LEAST EVERY 4 MONTHS, CHECK ALL BOLTS, SCREWS AND KNOBS TO BE SURE THEY ARE TIGHT
- IF PARTS ARE MISSING, BROKEN, DAMAGED OR WORN, STOP USE OF THIS PRODUCT UNTIL REPAIRS ARE MADE, USING FACTORY AUTHORISED PARTS
- FAILURE TO FOLLOW THESE WARNINGS COULD RESULT IN SERIOUS INJURY



1



2



3

